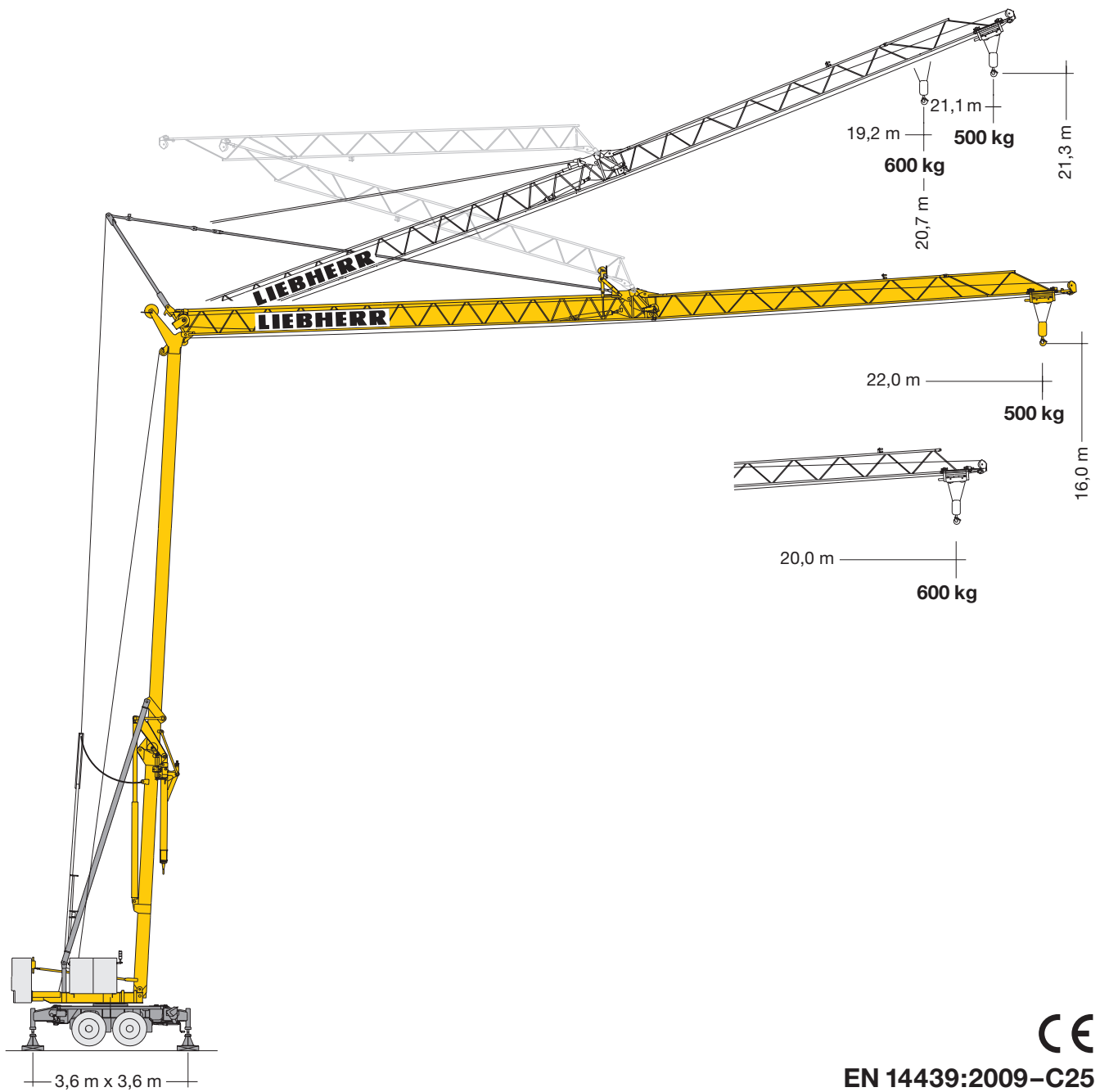


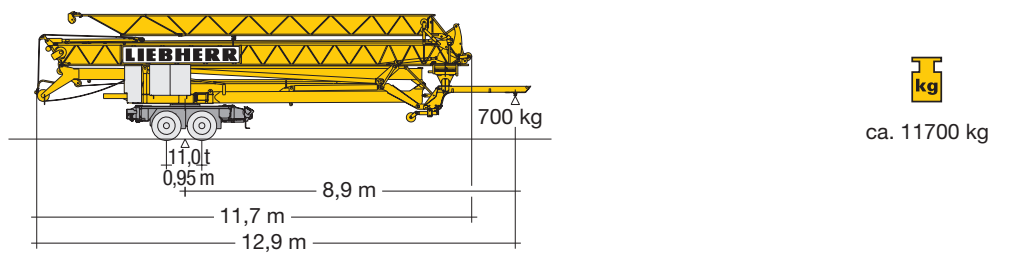
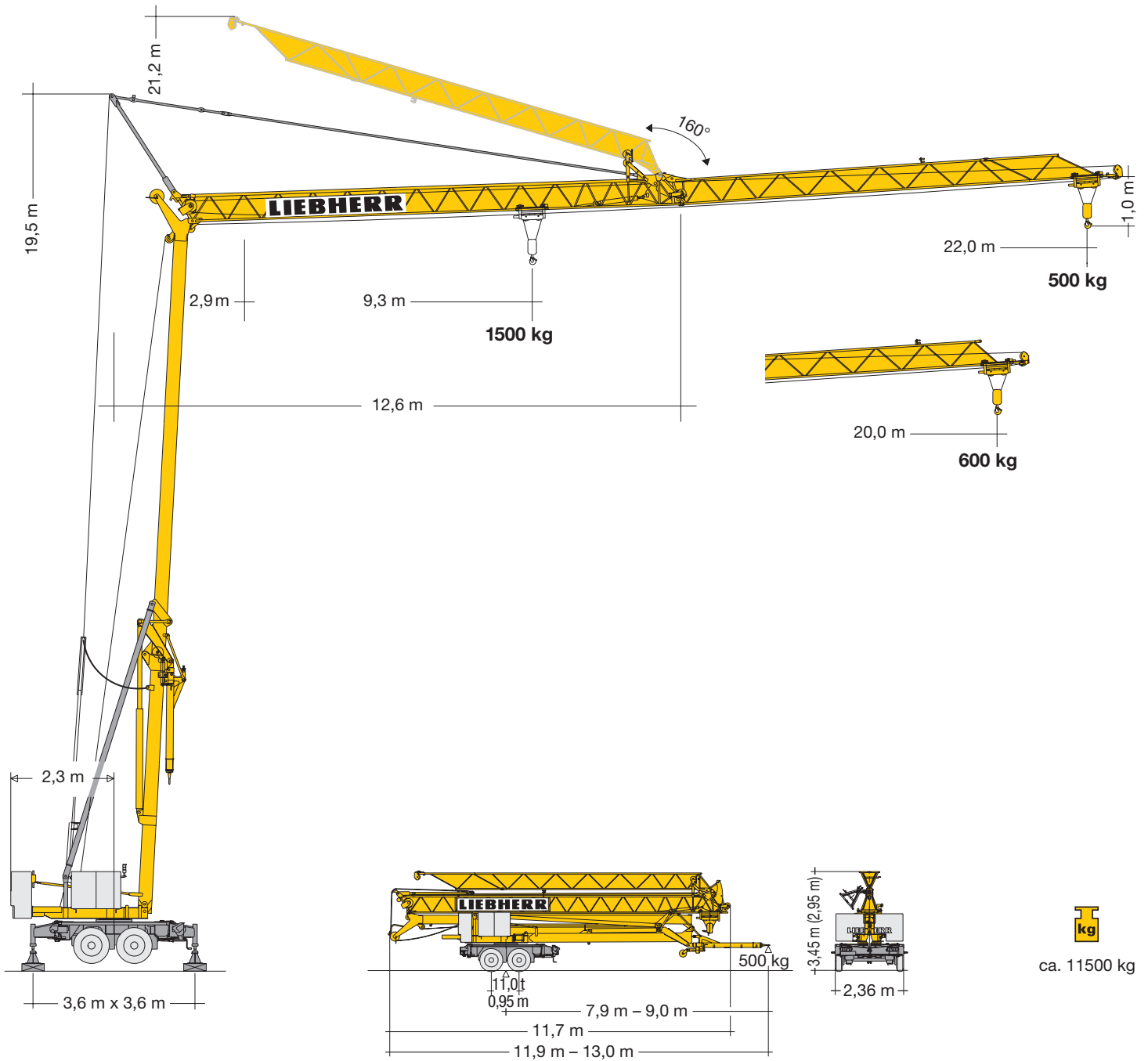
Turmdrehkran 13 HM.1

Tower Crane / Grue à tour / Gru a torre / Grúa torre
Guindaste de torre / Башенный поворотный кран



EN 14439:2009-C25

LIEBHERR







Gewicht

Weight / Poids / Peso / Peso / Pesos / Macca

	1 x 4600 kg	r = 2,3 m		6900 kg
--	-------------	-----------	--	---------

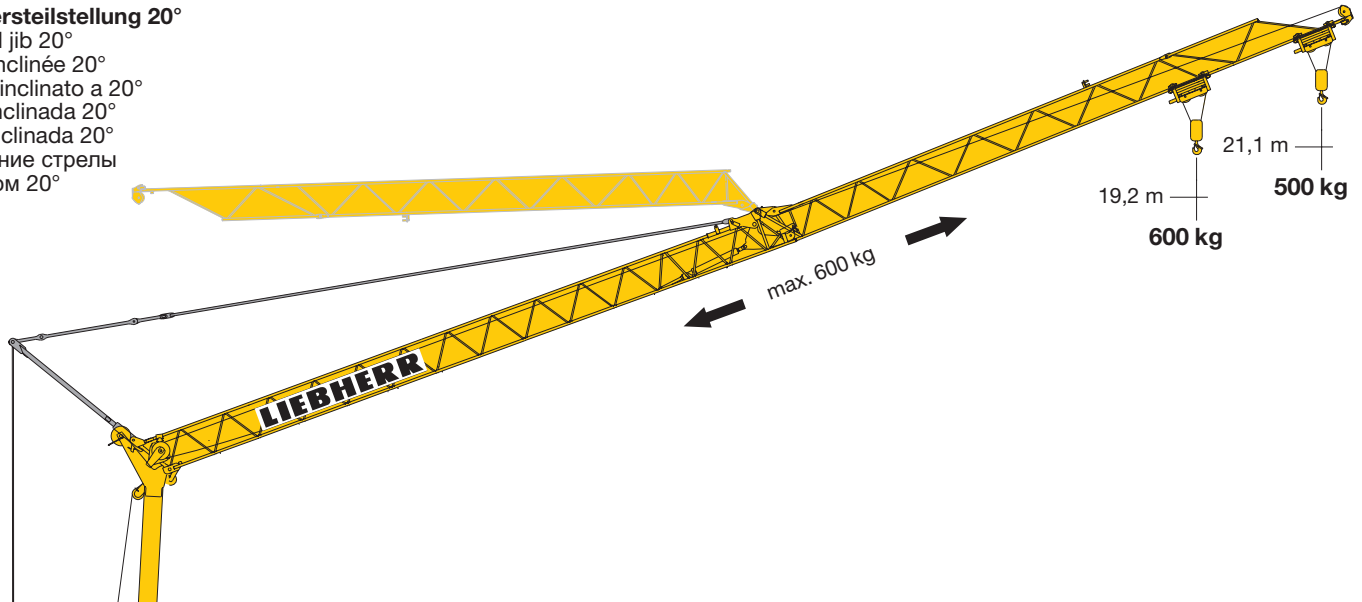
Ausladung und Tragfähigkeit

Radius and capacity / Portée et charge / Sbraccio e portata
Alcances y cargas / Alcance e capacidade de carga / Вылет и грузоподъемность

m	m / kg		m/kg												
			10,0	11,0	12,0	13,0	14,0	15,0	16,0	17,0	18,0	19,0	20,0	21,0	22,0
22,0	2,9–9,3 1500		1360	1200	1080	970	890	810	750	690	650	600	570	530	500
20,0	2,9–9,7 1500		1440	1270	1140	1030	940	860	790	740	690	640	600		
11,6	2,9–10,4 1500		1500	1390	1300										




Auslegersteilstellung 20°

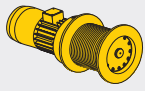

Elevated jib 20°
Flèche inclinée 20°
Braccio inclinato a 20°
Pluma inclinada 20°
Lança inclinada 20°
Положение стрелы под углом 20°





Antriebe


Driving units / Mécanismes d'entraînement / Meccanismi / Mecanismos / Mecanismos / Приводы

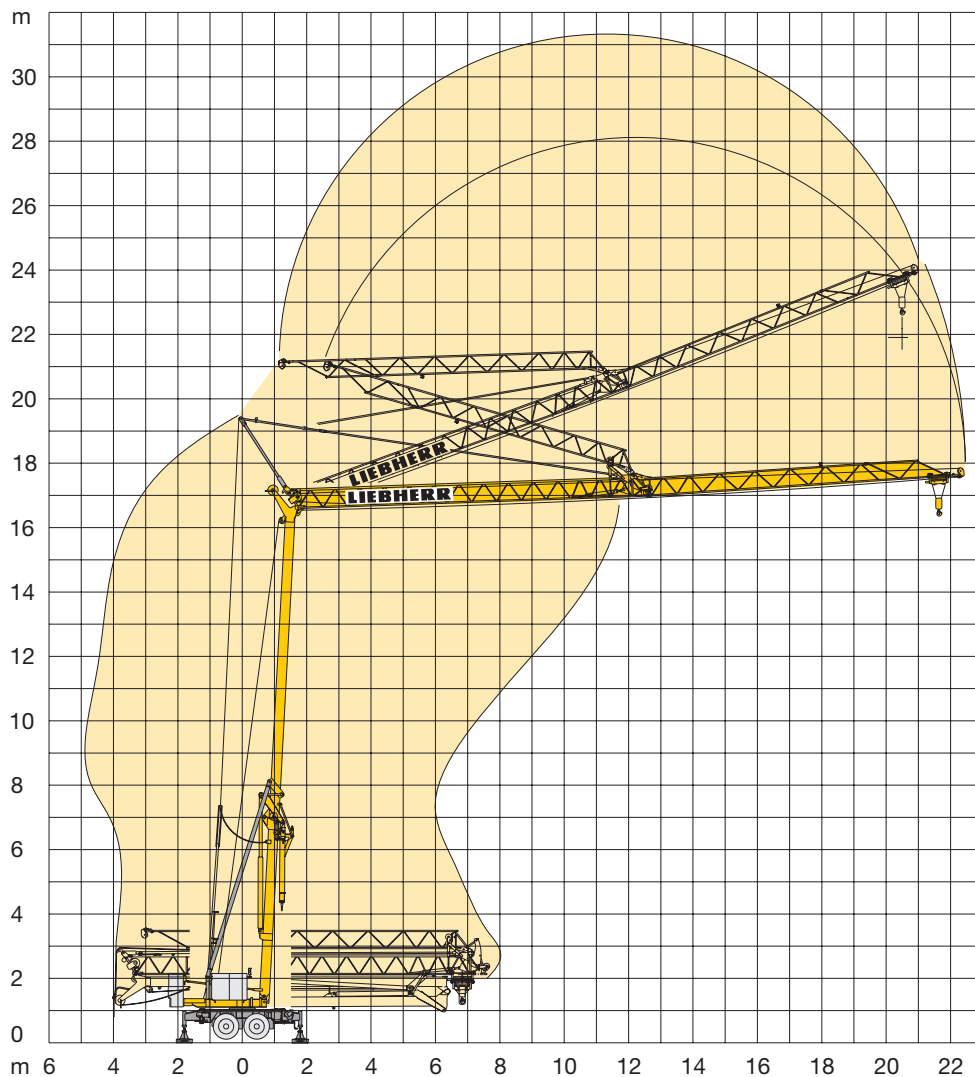
	230 V	400 V	
	U/min 0 ↔ 0,5 sl./min tr./min	U/min 0 ↔ 1,0 sl./min tr./min	1,1 kW FU
	6,0 ↔ 12,0 m/min	12,0 / 24,0 m/min	0,9 / 1,2 kW
	ca. 160°/min.	ca. 160°/min.	3,0 kW

	Stufe / Step / Cran / Marcia Velocidad / Velocidade Передача kg m/min		
	3,5 kW	230 V FU	
		1	1500 2,5
		2	1500 5,0
		3	750 10,0
		400 V KL	
		1	1500 4,0
		2	1500 12,5
		3	750 25,0
		400 V FU	
	1	1500 2,5	
	2	1500 12,5	
	3	750 25,0	

BGL		C.0.05.0012
-----	---	-------------

	230 V	Hz	A
	30,0 m 3 x 2,5 mm ²	50	16,0

	400 V	Hz	kVA
	100,0 m 5 x 4 mm ² KL/FU	50	8,0



Kolli-Liste

Packing List / Liste de colisage / Lista dei colli
 Lista de contenido / Lista de embalagem / Упаковочный лист

Pos. Item Rep.	Anz. Qty. Qte.		L (m)	B (m)	H (m)	kg
1	1	Ausleger-Verlängerung 20,0 m – 22,0 m Jib extension / Rallonge de la flèche / Elemento estensione braccio / Prolongación de pluma Extensão da lança / Удлинение стрелы	3,00	0,71	0,60	35



Konstruktionsänderungen vorbehalten! / Subject to alterations! / Sous
 réserves de modifications! / Riservato il diritto di modifiche strutturali!
 ¡Sujeto a modificaciones! / Salvo modificação da construação! / Права на
 внесение конструкторских изменений сохраняются!

Sämtliche Angaben erfolgen ohne Gewähr. / This information is supplied without liability. / Ces
 renseignements sont sans garantie. / Tutte le indicazioni fornite senza garanzia. / Declinamos
 toda responsabilidad derivada de la información proporcionada. / Declinamos qualquer respon-
 sabilidade quanto à informação fornecida. / Все данные указаны без обязательств.

120 P – 6100 • EN 14439:2009 – DIN 15018-H1/B3 • BGL C.0.05.0012 • 04.11 / 7

Printed in Germany.