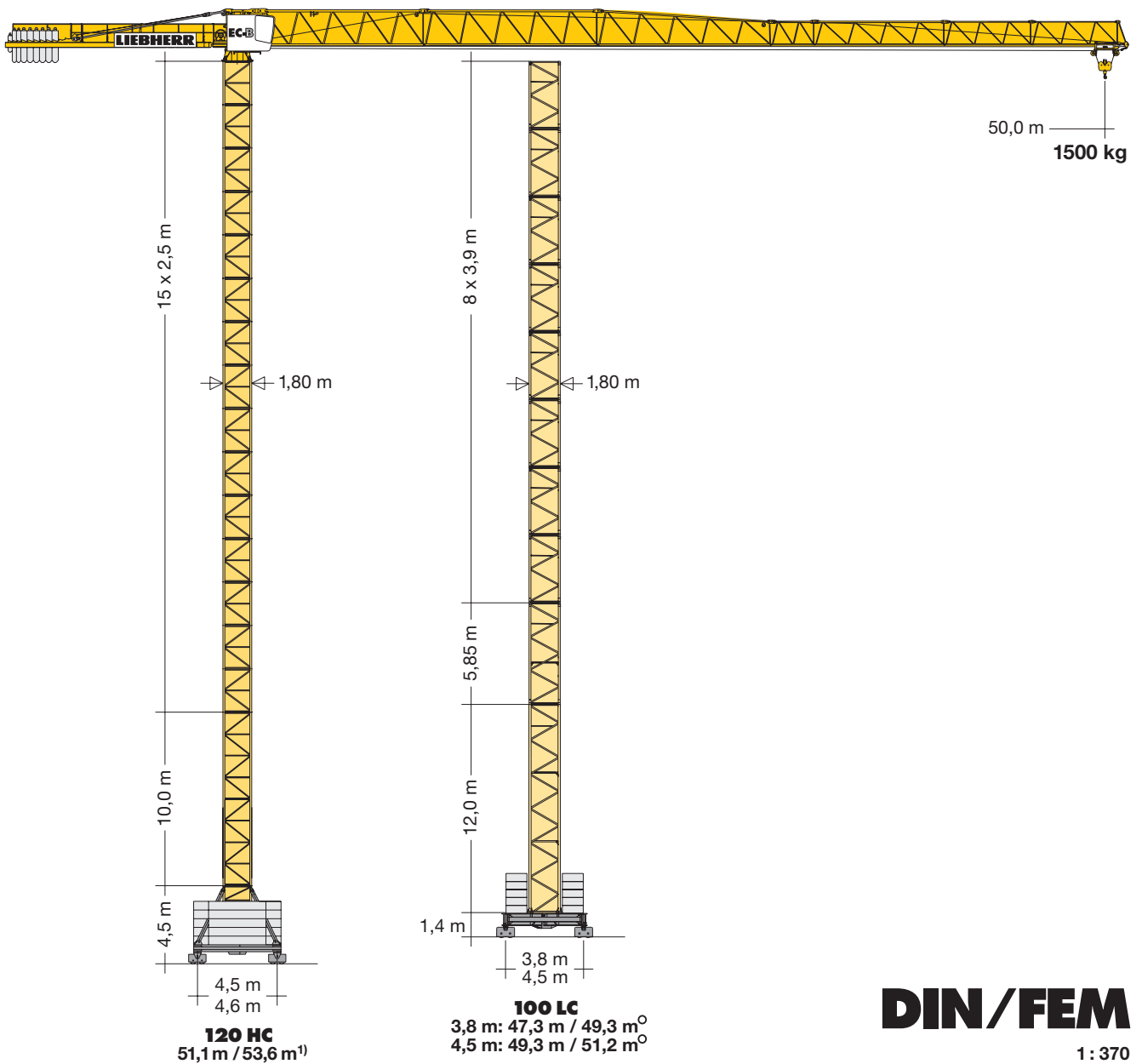


Turmdrehkran 90 EC-B 6

Tower Crane / Grue à tour / Gru a torre
Grúa torre / Guindaste de torre

▶ **90 EC-B 6**

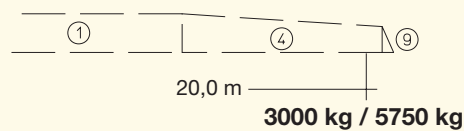
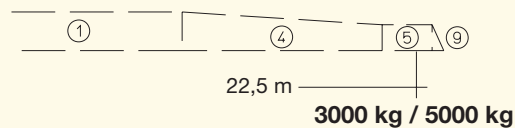
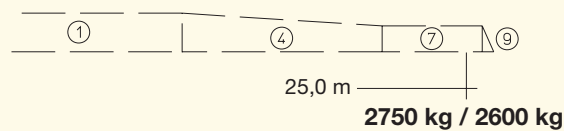
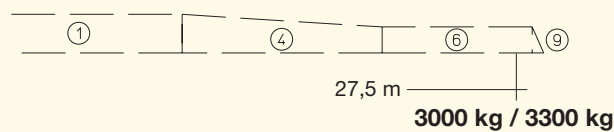
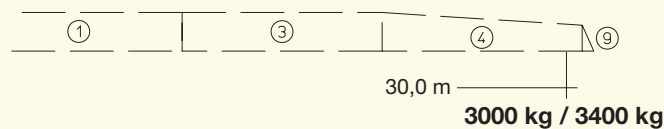
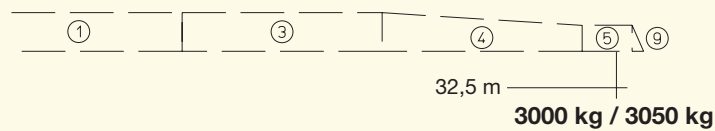
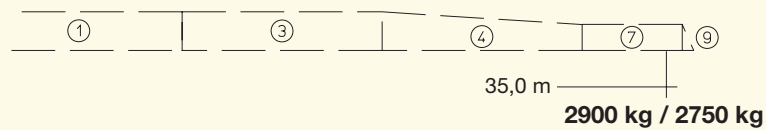
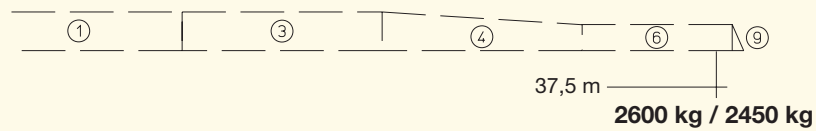
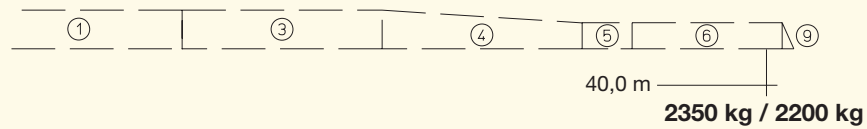
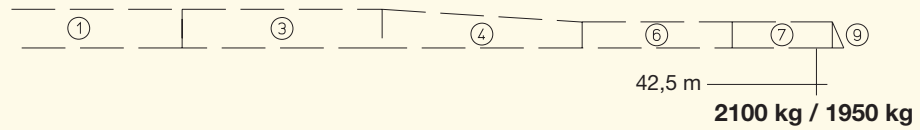
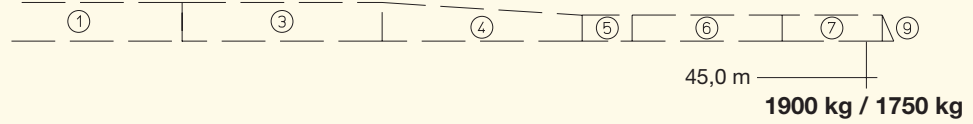
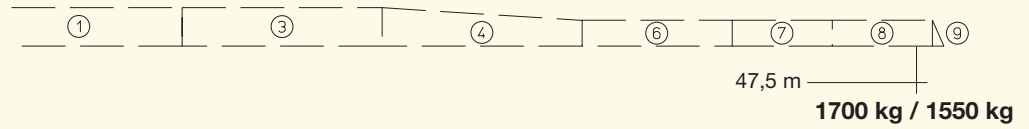
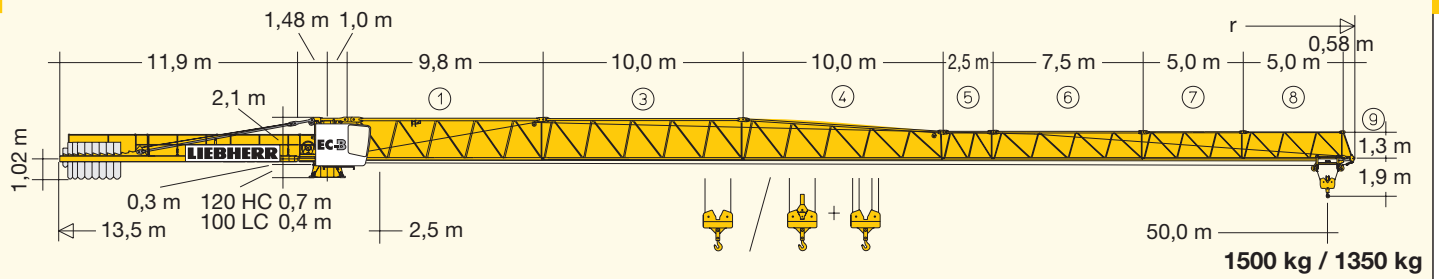
90 EC-B 6 FR.tronic®




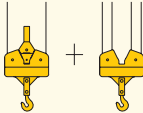
DIN/FEM

1 : 370

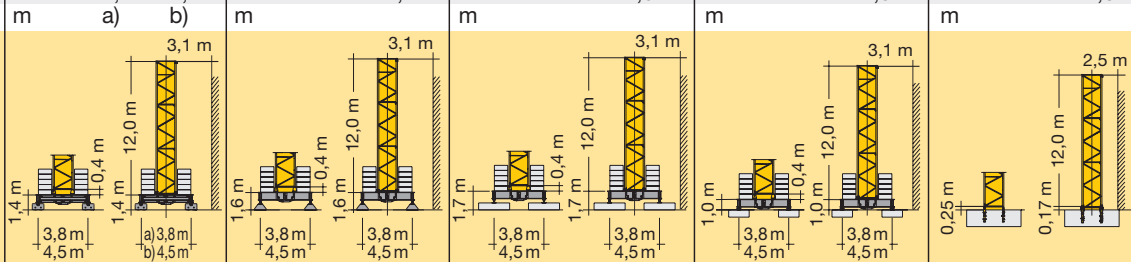
LIEBHERR



| | |  | | m/kg | | | | | | | | | | | | | | |
|------|------------|---|------|------|------|------|------|------|------|------|------|------|------|------|------|------|------|------|
| m | r | m/kg | | 15,0 | 17,5 | 20,0 | 22,5 | 25,0 | 27,5 | 30,0 | 32,5 | 35,0 | 37,5 | 40,0 | 42,5 | 45,0 | 47,5 | 50,0 |
| 50,0 | (r = 51,5) | 2,5-28,3 | 3000 | 3000 | 3000 | 3000 | 3000 | 3000 | 3000 | 2810 | 2560 | 2340 | 2150 | 1990 | 1850 | 1720 | 1600 | 1500 |
| 47,5 | (r = 49,0) | 2,5-29,6 | 3000 | 3000 | 3000 | 3000 | 3000 | 3000 | 3000 | 2960 | 2700 | 2470 | 2280 | 2110 | 1950 | 1820 | 1700 | |
| 45,0 | (r = 46,5) | 2,5-30,7 | 3000 | 3000 | 3000 | 3000 | 3000 | 3000 | 3000 | 3000 | 2810 | 2570 | 2370 | 2200 | 2040 | 1900 | | |
| 42,5 | (r = 44,0) | 2,5-31,4 | 3000 | 3000 | 3000 | 3000 | 3000 | 3000 | 3000 | 3000 | 2890 | 2650 | 2440 | 2260 | 2100 | | | |
| 40,0 | (r = 41,5) | 2,5-32,5 | 3000 | 3000 | 3000 | 3000 | 3000 | 3000 | 3000 | 3000 | 3000 | 2750 | 2540 | 2350 | | | | |
| 37,5 | (r = 39,0) | 2,5-33,2 | 3000 | 3000 | 3000 | 3000 | 3000 | 3000 | 3000 | 3000 | 3000 | 2820 | 2600 | | | | | |
| 35,0 | (r = 36,5) | 2,5-34,0 | 3000 | 3000 | 3000 | 3000 | 3000 | 3000 | 3000 | 3000 | 3000 | 2900 | | | | | | |
| 32,5 | (r = 34,0) | 2,5-32,5 | 3000 | 3000 | 3000 | 3000 | 3000 | 3000 | 3000 | 3000 | 3000 | 3000 | | | | | | |
| 30,0 | (r = 31,5) | 2,5-30,0 | 3000 | 3000 | 3000 | 3000 | 3000 | 3000 | 3000 | 3000 | | | | | | | | |
| 27,5 | (r = 29,0) | 2,5-27,5 | 3000 | 3000 | 3000 | 3000 | 3000 | 3000 | 3000 | | | | | | | | | |
| 25,0 | (r = 26,5) | 2,5-23,2 | 3000 | 3000 | 3000 | 3000 | 2750 | | | | | | | | | | | |
| 22,5 | (r = 24,0) | 2,5-22,5 | 3000 | 3000 | 3000 | 3000 | | | | | | | | | | | | |
| 20,0 | (r = 21,5) | 2,5-20,0 | 3000 | 3000 | 3000 | | | | | | | | | | | | | |

| | |  | | m/kg | | | | | | | | | | | | | | | | |
|------|------------|---|------|----------|------|------|------|------|------|------|------|------|------|------|------|------|------|------|------|------|
| m | r | m/kg | | 15,0 | 17,5 | 20,0 | 22,5 | 25,0 | 27,5 | 30,0 | 32,5 | 35,0 | 37,5 | 40,0 | 42,5 | 45,0 | 47,5 | 50,0 | | |
| 50,0 | (r = 51,5) | 2,5-27,2 | 3000 | 2,5-15,5 | 6000 | 6000 | 5220 | 4460 | 3880 | 3420 | 3040 | 2720 | 2460 | 2230 | 2030 | 1880 | 1710 | 1580 | 1460 | 1350 |
| 47,5 | (r = 49,0) | 2,5-28,5 | 3000 | 2,5-16,1 | 6000 | 6000 | 5470 | 4680 | 4080 | 3590 | 3200 | 2870 | 2590 | 2360 | 2150 | 1970 | 1820 | 1680 | 1550 | |
| 45,0 | (r = 46,5) | 2,5-29,5 | 3000 | 2,5-16,6 | 6000 | 6000 | 5670 | 4860 | 4230 | 3730 | 3320 | 2980 | 2700 | 2450 | 2240 | 2060 | 1890 | 1750 | | |
| 42,5 | (r = 44,0) | 2,5-30,2 | 3000 | 2,5-17,0 | 6000 | 6000 | 5800 | 4970 | 4330 | 3820 | 3410 | 3060 | 2770 | 2520 | 2310 | 2120 | 1950 | | | |
| 40,0 | (r = 41,5) | 2,5-31,2 | 3000 | 2,5-17,5 | 6000 | 6000 | 6000 | 5140 | 4480 | 3960 | 3530 | 3170 | 2870 | 2620 | 2390 | 2200 | | | | |
| 37,5 | (r = 39,0) | 2,5-31,8 | 3000 | 2,5-17,8 | 6000 | 6000 | 6000 | 5250 | 4580 | 4040 | 3610 | 3240 | 2940 | 2680 | 2450 | | | | | |
| 35,0 | (r = 36,5) | 2,5-32,6 | 3000 | 2,5-18,2 | 6000 | 6000 | 6000 | 5380 | 4690 | 4150 | 3700 | 3330 | 3020 | 2750 | | | | | | |
| 32,5 | (r = 34,0) | 2,5-32,5 | 3000 | 2,5-18,3 | 6000 | 6000 | 6000 | 5430 | 4740 | 4190 | 3740 | 3370 | 3050 | | | | | | | |
| 30,0 | (r = 31,5) | 2,5-30,0 | 3000 | 2,5-18,5 | 6000 | 6000 | 6000 | 5490 | 4790 | 4230 | 3780 | 3400 | | | | | | | | |
| 27,5 | (r = 29,0) | 2,5-27,5 | 3000 | 2,5-16,6 | 6000 | 6000 | 6000 | 5630 | 4830 | 4200 | 3710 | 3300 | | | | | | | | |
| 25,0 | (r = 26,5) | 2,5-22,2 | 3000 | 2,5-12,5 | 4850 | 4040 | 3440 | 2970 | 2600 | | | | | | | | | | | |
| 22,5 | (r = 24,0) | 2,5-22,5 | 3000 | 2,5-19,2 | 6000 | 6000 | 6000 | 5730 | 5000 | | | | | | | | | | | |
| 20,0 | (r = 21,5) | 2,5-20,0 | 3000 | 2,5-19,3 | 6000 | 6000 | 6000 | 5750 | | | | | | | | | | | | |

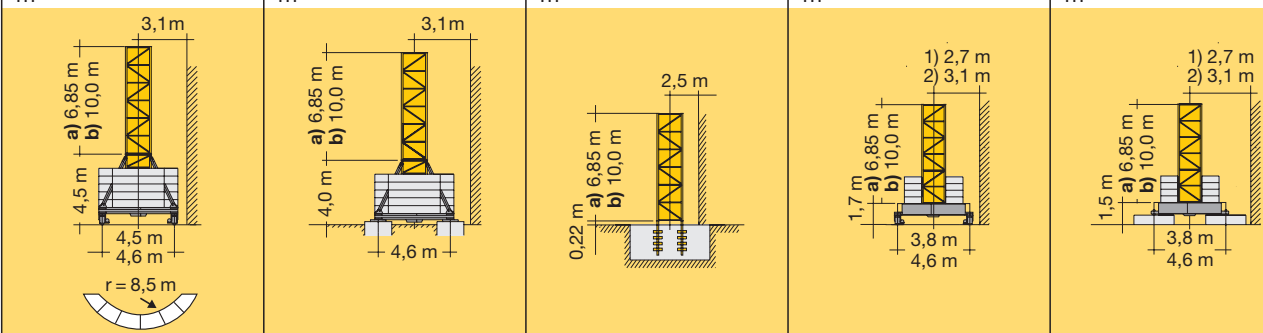
| | | | | 100 LC | | | | | | | | | | | |
|------|--------------|-------|-------|--------|-------|-------|-------|------|-------|-------|-------|-------|-------|-------|--|
| 3,9m | 3,9m + 5,85m | 5,85m | 11,7m | | | | | | | | | | | | |
| 11 | | | | 43,5° | - | - | 43,7° | - | 43,8° | - | 43,1° | - | 42,0° | - | |
| 10 | 9+1 | 7 | | 41,6 | - | - | 41,8 | - | 41,9 | - | 41,2 | - | 40,0 | - | |
| | 8+1 | | | 39,6 | - | 51,2° | 39,8 | - | 39,9 | 51,5° | 39,2 | 50,8° | 38,1 | 50,0° | |
| 9 | | 6 | 3 | 37,7 | 49,3° | 49,3 | 37,9 | 49,5 | 38,0 | 49,6 | 37,3 | 48,9 | 36,1 | 48,1 | |
| | 7+1 | | | 35,7 | 47,3 | 47,3 | 35,9 | 47,5 | 36,0 | 47,6 | 35,3 | 46,9 | 34,2 | 46,1 | |
| 8 | | | | 33,8 | 45,4 | 45,4 | 34,0 | 45,6 | 34,1 | 45,7 | 33,4 | 45,0 | 32,2 | 44,2 | |
| | 6+1 | 5 | | 31,8 | 43,4 | 43,4 | 32,0 | 43,6 | 32,1 | 43,7 | 31,4 | 43,0 | 30,3 | 42,2 | |
| 7 | | | | 29,9 | 41,5 | 41,5 | 30,1 | 41,7 | 30,2 | 41,8 | 29,5 | 41,1 | 28,3 | 40,3 | |
| | 5+1 | | | 27,9 | 39,5 | 39,5 | 28,1 | 39,7 | 28,2 | 39,8 | 27,5 | 39,1 | 26,4 | 38,3 | |
| 6 | | | | 26,0 | 37,6 | 37,6 | 26,2 | 37,8 | 26,3 | 37,9 | 25,6 | 37,2 | 24,4 | 36,4 | |
| | 4+1 | 4 | 2 | 24,0 | 35,6 | 35,6 | 24,2 | 35,8 | 24,3 | 35,9 | 23,6 | 35,2 | 22,5 | 34,4 | |
| 5 | | | | 22,1 | 33,7 | 33,7 | 22,3 | 33,9 | 22,4 | 34,0 | 21,7 | 33,3 | 20,5 | 32,5 | |
| | 3+1 | 3 | | 20,1 | 31,7 | 31,7 | 20,3 | 31,9 | 20,4 | 32,0 | 19,7 | 31,3 | 18,6 | 30,5 | |
| 4 | | | | 18,2 | 29,8 | 29,8 | 18,4 | 30,0 | 18,5 | 30,1 | 17,8 | 29,4 | 16,6 | 28,6 | |
| | 2+1 | | | 16,2 | 27,8 | 27,8 | 16,4 | 28,0 | 16,5 | 28,1 | 15,8 | 27,4 | 14,7 | 26,6 | |
| 3 | | | | 14,3 | 25,9 | 25,9 | 14,5 | 26,1 | 14,6 | 26,2 | 13,9 | 25,5 | 12,7 | 24,7 | |
| | 1+1 | 2 | 1 | 12,3 | 23,9 | 23,9 | 12,5 | 24,1 | 12,6 | 24,2 | 11,9 | 23,5 | 10,8 | 22,7 | |
| 2 | | | | 10,4 | 22,0 | 22,0 | 10,6 | 22,2 | 10,7 | 22,3 | 10,0 | 21,6 | 8,8 | 20,8 | |
| | 0+1 | 1 | | 8,4 | 20,0 | 20,0 | 8,6 | 20,2 | 8,7 | 20,3 | 8,0 | 19,6 | 6,9 | 18,8 | |
| 1 | | | | 6,5 | 18,1 | 18,1 | 6,7 | 18,3 | 6,8 | 18,4 | 6,1 | 17,7 | 4,9 | 16,9 | |
| | 0 | 0 | 0 | 4,5 | 16,1 | 16,1 | 4,7 | 16,3 | 4,8 | 16,4 | 4,1 | 16,7 | 3,0 | 14,9 | |
| 0 | | | | - | 12,2 | 12,2 | - | 12,4 | - | 12,5 | - | 11,8 | - | 11,0 | |

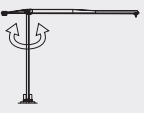
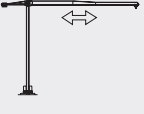
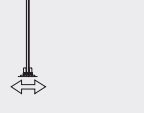



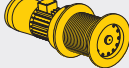


○ = Ohne Kabine. / Without cabin. / Sans cabine. / Senza cabina. / Sin cabina. / Sem cabine.

Weitere Hubhöhen sowie Klettern auf Anfrage. / Further hoist heights and climbing on request. / Hauteurs sous crochet plus élevées et hissage sur demande. / Altre altezze di sollevamento come pure telescopaggio, su richiesta. / Para alturas bajo gancho superiores y trepado, consultar. / Outras alturas de elevação e ascensionamento, mediante consulta.

| 120 HC | | | | | | | | | | |
|--------|----------------------|----------------------|----------------------|----------------------|----------------------|----------------------|----------------------|----------------------|----------------------|----------------------|
| 16 | 50,5 ¹⁾ | 53,6 ¹⁾ | 50,0 ¹⁾ | 53,1 ¹⁾ | 46,2 ¹⁾ | 49,3 ¹⁾ | 47,7 ¹⁾ | 50,8 ¹⁾ | 47,5 ¹⁾ | 50,6 ¹⁾ |
| 15 | 48,0 ²⁾³⁾ | 51,1 ²⁾³⁾ | 47,5 ²⁾³⁾ | 50,6 ²⁾³⁾ | 43,7 ²⁾³⁾ | 46,8 ²⁾³⁾ | 45,2 ²⁾³⁾ | 48,3 ²⁾³⁾ | 45,0 ²⁾³⁾ | 48,1 ²⁾³⁾ |
| 14 | 45,5 ⁴⁾ | 48,6 ⁴⁾ | 45,0 ⁴⁾ | 48,1 ⁴⁾ | 41,2 ⁴⁾ | 44,3 ⁴⁾ | 42,7 ⁴⁾ | 45,8 ⁴⁾ | 42,5 ⁴⁾ | 45,6 ⁴⁾ |
| 13 | 43,0 | 46,1 | 42,5 | 45,6 | 38,7 | 41,8 | 40,2 | 43,3 | 40,0 | 43,1 |
| 12 | 40,5 | 43,6 | 40,0 | 43,1 | 36,2 | 39,3 | 37,7 | 40,8 | 37,5 | 40,6 |
| 11 | 38,0 | 41,1 | 37,5 | 40,6 | 33,7 | 36,8 | 35,2 | 38,3 | 35,0 | 38,1 |
| 10 | 35,5 | 38,6 | 35,0 | 38,1 | 31,2 | 34,3 | 32,7 | 35,8 | 32,5 | 35,6 |
| 9 | 33,0 | 36,1 | 32,5 | 35,6 | 28,7 | 31,8 | 30,2 | 33,3 | 30,0 | 33,1 |
| 8 | 30,5 | 33,6 | 30,0 | 33,1 | 26,2 | 29,3 | 27,7 | 30,8 | 27,5 | 30,6 |
| 7 | 28,0 | 31,1 | 27,5 | 30,6 | 23,7 | 26,8 | 25,2 | 28,3 | 25,0 | 28,1 |
| 6 | 25,5 | 28,6 | 25,0 | 28,1 | 21,2 | 24,3 | 22,7 | 25,8 | 22,5 | 25,6 |
| 5 | 23,0 | 26,1 | 22,5 | 25,6 | 18,7 | 21,8 | 20,2 | 23,3 | 20,0 | 23,1 |
| 4 | 20,5 | 23,6 | 20,0 | 23,1 | 16,2 | 19,3 | 17,7 | 20,8 | 17,5 | 20,6 |
| 3 | 18,0 | 21,1 | 17,5 | 20,6 | 13,7 | 16,8 | 15,2 | 18,3 | 15,0 | 18,1 |
| 2 | 15,5 | 18,6 | 15,0 | 18,1 | 11,2 | 14,3 | 12,7 | 15,8 | 12,5 | 15,6 |
| 1 | 13,0 | 16,1 | 12,5 | 15,6 | 8,7 | 11,8 | 10,2 | 13,3 | 10,0 | 13,1 |
| 0 | a) 10,5 | b) 13,6 | a) 10,0 | b) 13,1 | a) 6,2 | b) 9,3 | a) 7,7 | b) 10,8 | a) 7,5 | b) 10,6 |



| | | |
|---|-------------------------------------|-----------------------------------|
|  | U/min 0 ↔ 0,8 sl./min tr./min | 7,5 kW FU |
|  | 0 ↔ 63,0 m/min 0 ↔ 80,0 m/min | 3,0 kW FU 5,4 kW FU |
|  | 25,0 m/min | 2 x 4,0 kW |
|  | kVA | 22 kW 22 kW FU 30,0 28,0 |


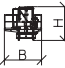

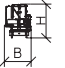

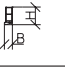

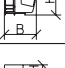



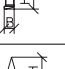
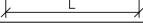

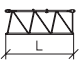
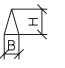
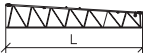
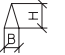
| | | | | | |
|---|---|----|-------|------|------|
|  | Stufe / Step Cran / Marcia Marcha / Marcha | kg | m/min | | |
|  3,8 / 18,5 / 22 kW WIW 230 MZ 402 149,0 / 74,0 m LS-Trommel | 5 Lagen Layers Couches Strati Camadas Capas | 1 | 3000 | 3000 | 6,2 |
| | | 2 | 3000 | 3000 | 28,0 |
| | | 3 | 1700 | 1600 | 58,0 |
| max. 217,0 / 108,0 m** | | | | | |
|  22 kW FU WIW 230 MZ 404 149,0 / 74,0 m LS-Trommel | 5 Lagen Layers Couches Strati Camadas Capas | 1 | 3000 | 3000 | 3,1 |
| | | 2 | 3000 | 3000 | 31,0 |
| | | 3 | 2400 | 2250 | 43,0 |
| | | 4 | 1500 | 1350 | 70,0 |
| max. 217,0 / 108,0 m** | | | | | |
| | | 1 | | 6000 | 3,1 |
| | | 2 | | 6000 | 14,0 |
| | | 3 | | 3500 | 29,0 |

** Weitere Hublastdaten: siehe Betriebsanleitung. / Further hoist load data: see instruction manual. / Autres données de la charge de levage: voir manuel d'instruction. / Altri dati sui carichi sollevati: consultare il manuale d'istruzione. / Alturas bajo granco superiores según manual. / Outras tabelas de carga: consultar manual de instruções.

Kolli-Liste

Packing List / Liste de colisage / Lista dei colli / Lista de contenido / Lista de embalagem

Montagegewichte: siehe Betriebsanleitung. / Erection weights: see instruction manual. / Poids de montage: voir manuel de service. / Pesos di montaggio: vedasi le istruzioni sull'uso. / Peso para el montaje: según manual. / Pesos de montagem: ver manual de instruções.

| Kranoberteil | | Upper part of crane / Partie supérieure de grue / Parte superiore della gru | Parte superior grúa / Parte superior do guindaste | | L (m) | B (m) | H (m) | kg* |
|-------------------------------|----------------------------|---|---|--|---------------------------------------|--------------------------------------|--------------------------------------|--|
| Pos. Item Rep. Voce Pos. Ref. | Anz. Qty. Qta. Cant. Cant. | Drehbühne mit Podesten / Slewing platform with platforms Plate-forme tournante avec plates-formes / Piattaforma girevole con pedana / Plataforma giratoria con plataforma / Plataforma giratória com plataforma |  |  | 2,71 | 2,90 | 2,58 | 5720 |
| 2 | 1 | Drehbühne / Slewing platform Ensemble mât cabine / Piattaforma girevole / Conjunto plataforma de giro / Plataforma giratória compl. |  |  | 2,71 | 2,25 | 2,58 | 5440 |
| 3 | 1 | Podeste / Platforms Plates-formes / Pedana / Plataformas / Plataformas |  |  | 2,33 2,40 2,33 | 0,50 1,04 0,65 | 1,36 1,33 1,36 | 120 150 120 |
| 4 | 1 | Kabine / Cabin Cabine / Cabina / Cabina / Cabina |  |  | 1,35 | 2,82 | 2,28 | 610 |
| 5 | 1 | Gegenausleger / Counter-jib Contre-flèche / Contrabaccio / Contrapluma / Contra-lança |  |  | 11,98 | 1,40 | 0,81 | 2720 |
| 6 | 1 | Podeste Gegenausleger / Counter-jib platforms Plates-formes de contre-flèche / Ballatoi controfreccia / Plataforma contrapluma / Plataforma contra-lança |  |  | 4,00 | 0,69 | 1,35 | 180 |
| 7 | 1 | Ausleger-Anlenkstück / Jib heel section Pied de flèche / Settore articolato di braccio / Pluma tramo primero / Base articulada de lança |  |  | 10,01 | 1,34 | 2,23 | ① 2350 |
| 8 | 1 | Ausleger-Zwischenstück / Intermediate jib section Élément intermédiaire de flèche / Spezzone di braccio / Tramo intermedio pluma / Peça suplementar da lança |  |  | 10,26 2,72 7,71 5,19 5,17 | 1,20 1,20 1,20 1,20 1,20 | 2,14 1,48 1,48 1,46 1,45 | ③ 1180 ⑤ 200 ⑥ 500 ⑦ 230 ⑧ 200 |
| 9 | 1 | Ausleger-Zwischenstück / Intermediate jib section Élément intermédiaire de flèche / Spezzone di braccio / Tramo intermedio pluma / Peça suplementar da lança |  |  | 10,22 | 1,20 | 2,08 | ④ 850 |

| Pos. Item Rep. Voce Pos. Ref. | Anz. Qty. Qta. Cant. Cant. | | | | L (m) | B (m) | H (m) | kg* |
|--|--|---|--|--|--|------------------------------|------------------------------|------------------------------|
| 10 | 1 | Ausleger-Kopfstück / Jib head section Pointe de flèche / Punta freccia Tramo punta de pluma / Cabeça de lança | | | 1,40 | 1,21 | 0,46 | ⊗ 80 |
| 11 | 1 | Laufkatze / Trolley Chariot / Carrello Carrito / Carrinho | | | 1,62 | 1,38 | 1,29 | 216 |
| 12 | 1 | Fahrkorb / Maintenance cage Nacelle d'entretien / Cestello di manutenzione Plataforma de mantenimiento | | | 0,78 | 0,66 | 1,25 | 35 |
| Turm Tower / Mât / Torre Torre / Torre | | | | | | | | |
| 13 | 1 | Grundturmstück / Base tower section Mât de base / Elemento di torre base Tramo base / Peça de base de torre | | | 100 LC 12,00 120 HC 6,85 120 HC 10,00 | 2,03 1,80 1,80 | 2,03 1,80 1,80 | 3820 2610 3530 |
| | | | | | 3,90 m 100 LC 4,17 5,85 m 100 LC 6,12 11,70 m 100 LC 11,97 | 1,80 1,80 1,80 | 1,80 1,80 1,80 | 1190 1620 2930 |
| 14 | 1 | Turmstück / Tower section Elément de mât / Elemento di torre Tramo torre / Torre | | | 120 HC 2,50 120 HC 5,00 120 HC 10,00 120 HC 12,50 | 1,80 1,80 1,80 1,80 | 1,80 1,80 1,80 1,80 | 1090 1830 3430 4200 |
| Klettereinrichtung Climbing equipment / Equipement de télescope / Attrezzatura per allungamento della gru Equipo de trepado / Acessórios p. subida no edifício | | | | | | | | |
| 15 | 1 | Führungsstück kpl. / Guide section cpl. Cage télescopique cpl. / Gabbia de sopraelevazione compl. / Torre de montaje completa / Peça de guia compl. | | | 100 LC 8,74 120 HC 6,45 120 HC 9,60 | 2,27 2,10 2,10 | 2,35 2,42 2,42 | 3130 3500 4440 |
| 16 | 1 | Führungsstück Turmstück / Tower guide section / Elément de mât télescopique Gabbia de sopraelevazione / Peça de guia Tramo torre de montaje | | | 100 LC 4,17 | 2,26 | 2,26 | 1440 |
| 17 | 1 | Kletterturmstück / Climbing tower section Elément de hissage de mât / Elemento torre di telescopaggio / Tramo de trepado Tramo de telescopagem | | | 120 HC 2,75 | 2,20 | 2,45 | 1450 |
| 18 | 1 | Hydraulikanlage, Stütz- und Klettertraverse / Hydraulic unit, supporting and climbing cross members / Système hydraul. avec traverses d'appui et de télescop. / Sist. idraul., traversa di appoggio e allugam. gru / Sistema hidráulico con traviesa de apoyo y trepado / Instalação hidráulica, tavessa de apoio e subida | | | 100 LC 2,00 120 HC 2,87 | 0,90 2,12 | 0,80 1,06 | 640 1050 |
| Fundamentkreuz Cruciform base / Châssis en croix / Carro della gru Carro de guindaste / Base cruciforme | | | | | | | | |
| 19 | 1 | Tragholm I / Arm I Longeron I / Longherone I Brazo I / Travessa I | | | (3,8 m) 100 LC 5,68 (4,5 m) 100 LC 6,67 120 HC 7,12 | 0,71 0,71 0,78 | 0,91 0,91 0,65 | 2090 2190 950 |
| 20 | 1 | Tragholm II / Arm II Longeron II / Longherone II Brazo II / Travessa II | | | (3,8 m) 100 LC 5,68 (4,5 m) 100 LC 6,67 120 HC 3,45 | 0,78 0,78 0,56 | 0,74 0,74 0,55 | 1870 1970 408 |
| 21 | 2 | Fahrschemel mit Antrieb / Rail bogie with drive / Bogie moteur / Telajo con gruppa propulsore / Caja rodillo motriz Quadra sem grupa de propulsão | | | 100 LC 1,31 120 HC 1,38 | 0,66 0,88 | 0,61 0,87 | 630 900 |
| 22 | 2 | Fahrschemel ohne Antrieb / Rail bogie without drive / Bogie fou / Telajo senza gruppa propulsore / Caja rodillo conducido Quadra com grupa de propulsão | | | 100 LC 1,04 120 HC 1,17 | 0,33 0,60 | 0,61 0,87 | 330 860 |

* Einzelgewichte. / Single weights. / Poids individuels. / Pesì di componenti. / Pesos unitarios. / Pesos de peças componentes.

Konstruktionsänderungen vorbehalten!

Subject to alterations! / Sous réserves de modifications!
Si fa riserva di modifiche! / ¡Sujeto a modificaciones!
Salvo modificação da construçao!

Sämtliche Angaben erfolgen ohne Gewähr. / This information is supplied without liability.

Ces renseignements sont sans garantie. / Le indicazioni contenute si intendono salvo errori ed omissioni.
Declinamos toda responsabilidad derivada de la información proporcionada. / Declinamos qualquer
responsabilidade quanto à informação fornecida.

121 P – 5161 H1 B3 DIN 15018 • BGL C.0.10.0090 / FEM (Section 1) – Krangruppe A3 • 04.07 / 6

Printed in Germany.